

## Installation Options & Preparations

**IMPORTANT:** It should 1st be determined that the structure where the "Flood Guardian System" is attached, be masonry, or of a structural impervious material. Also note that Permanent or Removable installations both require certain preparations in order to achieve maximum protection against water infiltration.

#1- You'll need to make sure the impervious surfaces in which the mounts and base plank gaskets come in contact with, are smooth, level and reasonably plumb, providing a proper seal.

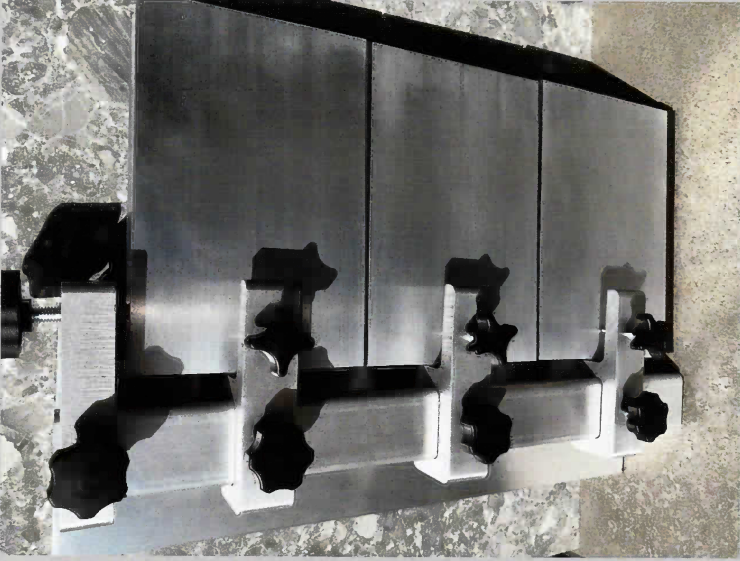
#2- Removable Wall or Jamb Mounts: The gaskets are designed to provide a watertight seal between the structure, and the system, hence the smooth surface.

#3 Permanently Attached Wall or Jamb Mounts: It is imperative you apply a generous amount of a non-shrink grout or caulking to the complete back surface of the mounts before bolting them to the structure. Any grout or caulking that oozes out, pretty much assures you of a perfect seal. (Cut & Clean after grout or silicone cures)

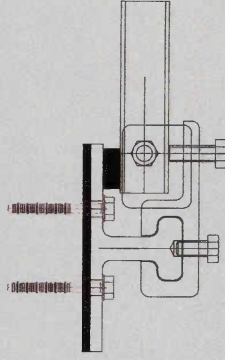
#4 After inspecting and making sure all the gaskets are in good shape, you may start deploying the Flood Guardian Panels, but just remember, while setting the planks, install the Plank Compression Clamps to help maintain the planks upright position, and proper distancing on the gaskets. This will make it easy to install the additional levels of planks. (Do not tighten the planks against the gasket until they are all installed.

#5- Gently tighten the Plank Compression Clamps, and make sure they make contact with the inner wall mount gaskets, then tighten the top compression clamp, sealing the Base Panel gasket to the surface. When the surface gasket is tightened, add a little more tension to the Plank Gaskets, making sure you have a watertight seal.

You're now ready to ride out the storm, and secure in the fact that you have taken every necessary step to protect your Family, Personal Belongings & Property.

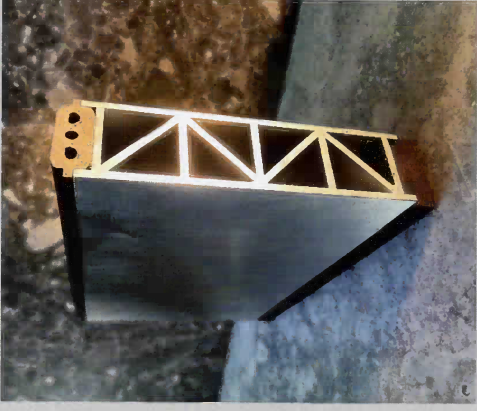
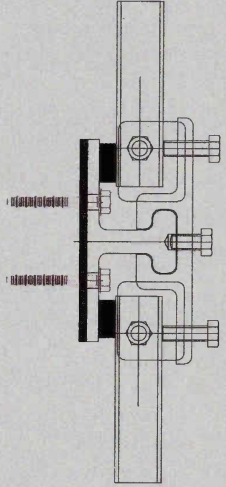


Above is a sample section of just how simple the system comes together, along with all the components needed.

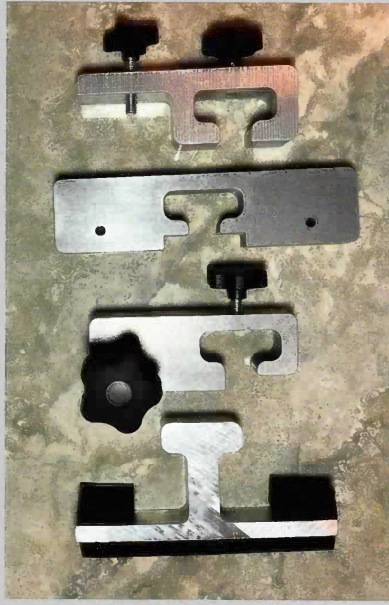


**Above:** A typical single opening application, showing the components, and how they come together. (Shown is the Left Wall Mount)

**Below:** A mullion application, with planks in both directions, and will either be freestanding or attached to a building.



Shown above is the 6" Flood Guardian Plank, which also comes in 12". This particular plank is also shown with the Base & Tier Gaskets attached.



## Wall Mount & Compression Clamps

Part: WM- Wall Mount (With Plank & Wall Mount Gaskets)  
 Part: SC1- Single downward compression clamp.  
 Part: MC2- Mullion downward compression clamp  
 Part: PFC- Plank face compression clamp  
 Part: JM- Is a "U" Shape Jamb Mount: (Not Shown)

## Knobs With Threaded Screw

Part: K225- Star Knob with Screw 3/8-16 x 2.25"  
 Part: K138- Star Knob with Screw 5/16-18 x 1 3/8"  
 Part: K75- Star Knob with Screw 5/16-18 x 3/4"

## Gaskets

Part: WMBG- Wall Mount Base Gasket  
 Part: WMPG- Wall Mount Plank Gasket 1.5" x 3/4"  
 Part: WMWG- Wall Mount Wall Gasket 6.5" x 3/8"  
 Part: PBG- Flood Guardian Plank - Base Gasket  
 Part: PTG- Flood Guardian Plank - Tier Gasket